

STUDOR[®] MINI-VENT[™]

Air Admittance Valve for Plumbing Ventilation

Product Information/Specification Sheet

DESCRIPTION

The Studor Mini-Vent AAV is an accepted alternative to replace all forms of conventional branch and stack venting. With localised active ventilation of the building drainage system it is proven that the Mini-Vent provides greater protection to prevent induced and self-siphonage of the fixture traps.

The Mini-Vent opens and admits fresh air when the negative (suction) pressure occurs from a fixture discharging into the system. This equalizes the pressure within the system and protects the trap seal. When the flow stops, the Mini-Vent closes by gravity, preventing any transmission of foul air.

The Mini-Vent is used as an alternative to extending the vent pipes through the roof or sidewall.

FEATURES

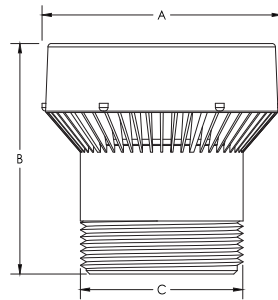
- Screening on the inside and outside of the Mini-Vent to protect the sealing membrane from foreign objects.
- Ability to divert condensation away from the sealing membrane.
- Prevents the release of foul air from the drainage system.
- Available in white ABS.
- As standard, the Mini-Vent is fitted with the push-fit Global Connector. For specific markets it may be provided with an alternative or no connector.

INSTALLATION

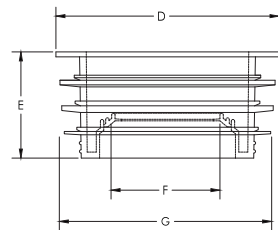
- The Mini-Vent should be connected to the piping in accordance with Studor's installation instructions.
- Refer to your local area regulations for open vent requirements.

WARRANTY

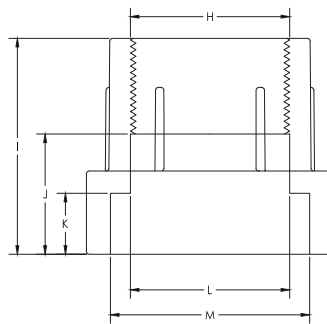
The Studor products have a lifetime warranty - equivalent to that of the drainage system in which they are installed. Visit www.studor.net for full details.



Mini-Vent



Global Connector
(supplied as standard)



US SCH40 Adaptor
(specific markets only, including North America, Canada and Mexico)

PIPE SIZES

Europe	AU/NZ	USA
DN 32-50	DN 32-50	1 1/4" - 2"

DIMENSIONS

Dimension	Metric (mm)	Imperial (inches)
A	Ø70	Ø2 12/16
B	67	2 10/16
C	Ø47	Ø1 14/16
D	Ø67	Ø2 10/16
E	31.9	1 4/16
F	Ø33	Ø1 5/16
G	Ø64	Ø2 9/16
H	Ø49	Ø1 15/16
I	68	2 11/16
J	38	1 8/16
K	19	12/16
L	Ø51	Ø2
M	Ø63	Ø2 9/16

Note: Dimensions for reference only

PERFORMANCE PARAMETER

Temperature range	-20°C to +60°C (CE) -40°F to +150°F (ASSE)
Opening pressure	-70 Pa (-0.010 PSI)
Max. pressure rating tightness	10,000 Pa (1m/40" H ₂ O) at 0 Pa or higher

Air flow capacity	Branch	Stack
Europe	7.5 l/s	7.5 l/s
AU/NZ	7.5 l/s /94 FU	7.5 l/s /7 FU
USA	1 to 160 DFU	8 to 24 DFU

MATERIALS

Component	Material
Mini-Vent cap & body	ABS
Mini-Vent membrane	Synthetic rubber
Global connector	TPE
US SCH40 adaptor	PVC

EN 12380		08
Studor Ventech Limited, Millennium House, Victoria Road Douglas, Isle of Man IM2 4RW, British Isles		
Valve to ventilate drainage systems Designation: AI Airflow capacity: 7.5 l/s Airtightness tested at: 30/500/10000 Pa Range of temperature: -20°C to +60°C Effectiveness at temperatures below zero: -20°C Pipe material in accordance with: EN1329-1, EN1451-1, EN4514, EN12056-1 Pipe DN: 32, 40, 50, 63		