



70304 in wall mounting enclosure

Electronic Temperature Controller Type 70304

microprocessor controlled with auto-tuning function

Special Features

- **A Multi-Talent**
- **Small dimensions**
- **Quite an Achievement**
- **Controller in a front mounting housing DIN-Format 48x48 mm**
- **Optional in wall mounting enclosure 150x200x120 mm incl. a 15A solid state relay**
- **Optional in rail mounting enclosure**

Application

The 70304 PID electronic temperature controller is especially designed for controlling of electrically heated M&C components with temperature sensor.

- Line break supervision also for thermocouple
- mA output as option

Description

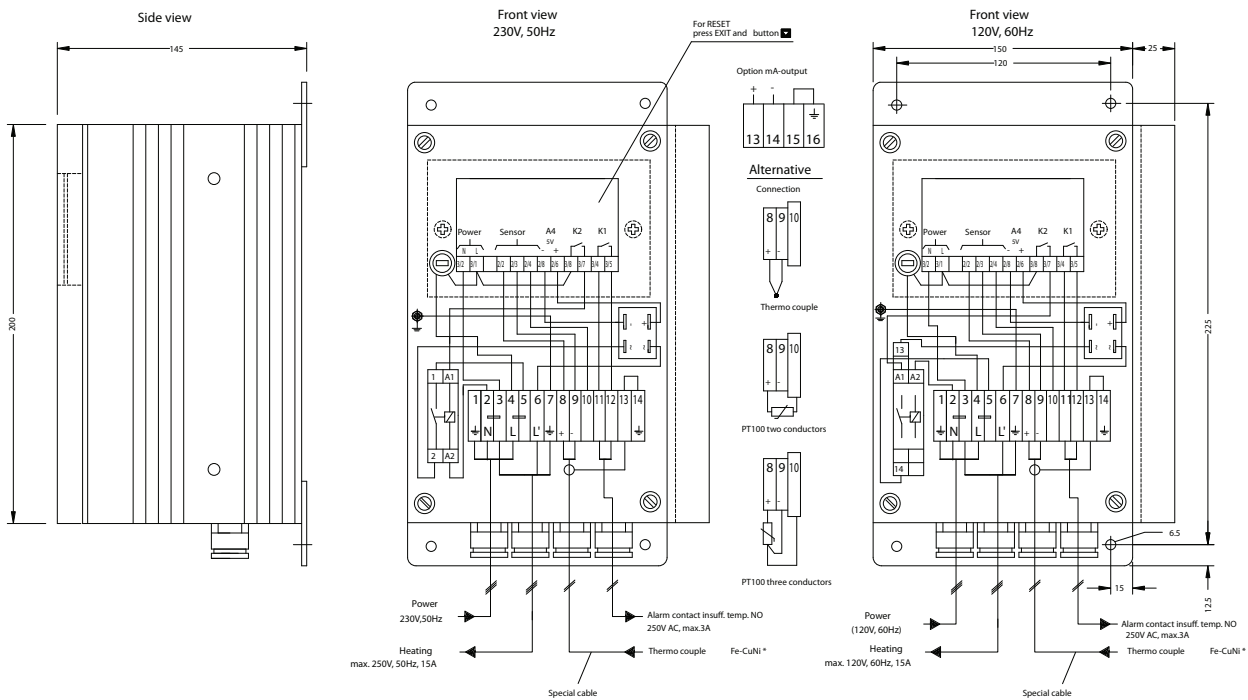
It is also available in a wall- or rail mounting housing and has the following features:

- Sensor input for Fe-CuNi (J), NiCr-Ni (K) thermocouple and Pt100 sensor
- Drive pulse for Solid State Relay main setting output
- Integrated power supply for mains supply of 110V up to 240V 50/60Hz
- Selectable functions by key pad
- Data storage power failure protected
- Control mode ON-OFF or PID
- PID control mode with auto-tuning function
- Alarm operation select with key setting for 8 modes operation
- Programming of heat or cool function
- Programming of switch cycle time
- Switching hysteresis at ON-OFF control mode adjustable
- Display preselect in °C or °F
- Free programmable temperature range
- Programming of ramp function
- Programming of display decimal point on ranges < +/-1000 °C / °F
- Lock select key funktion
- Front panel exchangeable plug-in unit
- Over temperature limiter with lock

Technical Data

Temperature controller type 70304	Basic controller 70304	In rail mounting housing 70304.2	In wall mounting housing 70304G	
Art.No.	01B8401	01B8456	01B8451	01B8451a
Temperature control range	Resistance thermometer, thermocouples			
Controlling output	0 / 12V DC, max. 30 mA to an external solid state relay			
Switching capacity solid state relays	external		max. 15A (High temperature limiter with continuous cutoff)	
Control mode	PID			
Status alarm	High temperature limiter with continuous cutoff, low temperature alarm: 1 contact NO each, potential free, contact rating 250V AC, 3A		Low temperature alarm: 1 contact NO, potential free, contact rating 250V AC, 3A	
Indicators	measuring temperature: 4 digits 7 Seg. LED red 10 mm; setting value: as listed before but 7.0 mm; ON operation, ramp function on, 2 alarms			
Temperatures	Ambient 0 -55 °C; storage -30 to +70°C		Ambient 0 -50 °C; storage -30 to +70°C	
Climatic conditions	<90% r.H., no dew		<90% r.H., dew allowed	
Electrical connection	Terminals 1,5 mm ²		4 mm ²	
Power supply	110-240 V +10/-15% 48-63 Hz, 8 VA		230V 50/60Hz 3450 VA	115V 50/60Hz 1725VA
Housing material	Synthetic material		steel, blue laquered	
Housing version	front mounting	rail mounting	wall mounting housing	
Weight / Protection	200 g / terminals IP20, housing IP 20, front plate IP 65 EN60529	320g / IP20 EN60529	3,7 kg / IP 65 EN60529	
Option: Controller with mA output for feedback value	01B8411	01B8457	01B8453	01B8453a

Dimensions type 70304G in wall mounting housing



Dimensions type 70304

