



BA

## Air clean up supply series BA

Version BA, BA-P4

### Special Features

- **High degree of purity:**  
 $C_n H_m < 10 \text{ppb}$ ,  
 $H_2O \text{ dew point } < -10 \text{ }^\circ\text{C}$
- **Easy filter and adsorber change at the front without tools**
- **Long service life**
- **Minimum operating costs**
- **Status self-monitoring**
- **Compact, easy-to-use and easy-to-service 19 inch plug-in housing**

### Application

When measuring hydrocarbons with a FID, hydrocarbon free burner air is necessary. The M&C-burner air BA conditioning has been developed in order to achieve proper burner air supply, independent of gas cylinders.

The BA unit can also be used as a zero gas generator when calibrating I.R.-analysers for immission monitoring.

### Description

The M&C-burner air conditioning versions BA and BA-P4 have been designed as compact, easy-to-use and easy-to-service 19 inch modules.

The M&C burner air conditioning version BA is designed without pump.

With version BA-P4 ambient air is taken in by means of the integrated pendulum reciprocating pump via the rear-mounted air suction filter and is directed to particle and condensate separation by means of a high-performance filter (0.01 micron of filter fineness) with an integrated, floating condensate drainer.

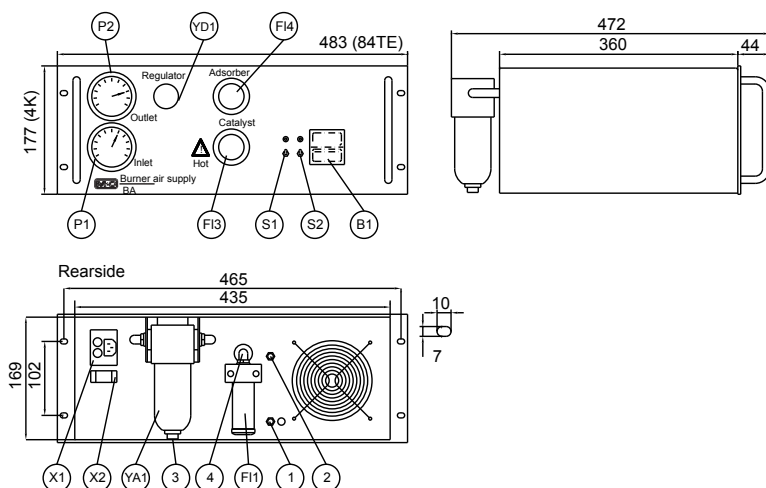
Drying the condensate-free compressed air to  $< -10 \text{ }^\circ\text{C}$  dew point takes place in a membrane dryer.

There upon the compressed air is cleaned as a result of catalytic oxidation at  $500 \text{ }^\circ\text{C}$  by means of a platinum/palladium catalyst of hydrocarbon traces.

A downstream adsorber cartridge with molecular sieve and activated carbon guarantees optimum purity of burner air.

The catalyst and adsorber material can, if required, be replaced at the front without tools.

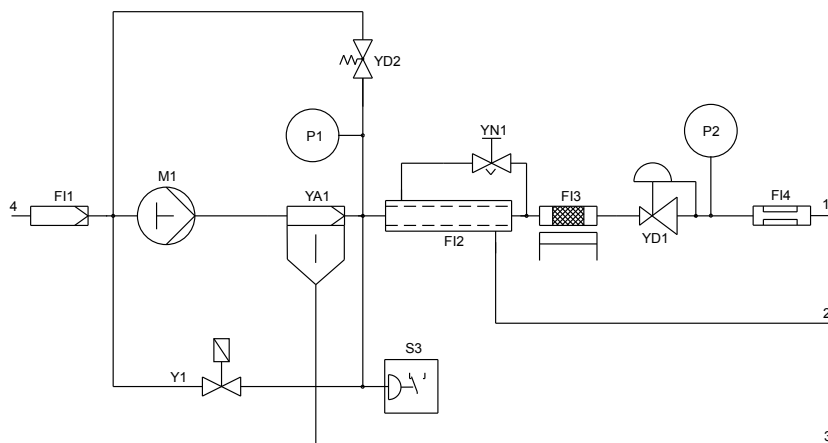
## Dimensions



Dimensions in mm

- 1 Burner air outlet
- 2 Vent
- 3 Condensate outlet
- 4 Air inlet for BA compressed air IN
- B1 Temperature controller
- F11 Air inlet filter
- F12 Membrane dryer
- F13 Catalyst
- F14 Adsorber
- M1 Compressor for BA solenoid valve ON
- P1 Inlet pressure gauge
- P2 Outlet pressure gauge
- S1 Pump ON switch for BA solenoid valve ON
- S2 Power ON switch
- S3 Pressure switch
- X1 Power supply
- X2 Status contact
- Y1 Solenoid valve
- YA1 Condensate drainer
- YD1 Pressure regulator
- YD2 Check valve
- YN1 Needle valve

## Functional diagram BA-P4



## Technical Data

Burner air conditioning series BA	version BA	version BA-P4
Part No.	60A2000	60A2200
Inlet pressure	compressed air, 4 - 5,8 bar	internal pump
Outlet pressure / Burner air flow	0-4 bar adjustable / max. 3 NI/min	
Ambient temperature	+5 °C to +40 °C	
Start up time	approx. 45 min.	
Catalyst temperature	500 °C	
Burner air purity	<10 ppb C <sub>n</sub> H <sub>m</sub> , H <sub>2</sub> O-dew point <-10 °C	
Catalyst poisons	Halogens, silicon, lead, materials containing phosphorous	
Storage temperature	-25 °C to +65 °C	
Relative humidity	<75 %, avoid condensation	
Inlet gas connection	compressed air in G1/4"i	air suction filter
Outlet gas connections	Hose connection DN 4/6 mm* Standard	
Condensate connection	G1/8 i DIN ISO 228/1	
Power supply	230V 50Hz 480VA	230V 50Hz 560VA
Electrical connections	Plug with 2 m cable for power in 9-pin sub-D connector for status contact	
Status signal contact for pressure and temperature	1 changeover contact - potential free, contact rating 24V, 1A	
Case protection	IP 20 EN60529	
Housing dimensions / protection	19" plug-in unit 4U, 84HP, depth 430 mm / IP 20 EN60529	
Weight	approx. 14,5 kg	approx. 16 kg
Electrical equipment standard	EN 61010	