



GL18-DN4/6/PV

Threaded Couplings for GL Connections

Connecting Adapters, Union Sealing Ring and Adjustable Couplings

Special Features

- Corrosion resistant
- Gas tight
- Easy to handle

Application

M&C "GL" glass connectors which are normally fitted with sealing rings may only be used to join or connect rigid tubes, such as Polyethylene or Polypropylene etc.

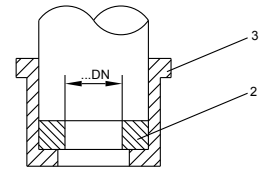
For flexible tubes, such as PVC, FPM and also PTFE, a connecting adapter must be used. When high operating pressures (>1 bar g) are encountered, connecting adapters for rigid tubes must be used.

When ordering connecting adapters on a new device, it is not necessary to place a separate order for sealing rings and compression nuts, unless the sizes required are different from standard.

Sealing Ring / compression nut:

	GL-Sealing Ring Pos. 2 Material: PTFE, Silicon	Part Number	GL-Compression Nut Pos. 3 Material: Pressed material	Part Number
Normally the "GL-18" Connector is fitted with a 6 mm i.d. sealing ring and the "GL-25" with one of 12mm i.d. (standard)	GL18-6 DN /mm	91F1010	GL18 Standard	91F1005
	GL18-8 DN/mm	91F1015	" "	"
	GL18-10 DN/mm	91F1020	" "	"
	GL25-8 DN/mm	90F0035	GL25 Standard	90F0020
	GL25-10 DN/mm	90F0030	" "	"
	GL25-12 DN/mm	90F0025	" "	"

GL-Sealing Ring GL-Compression Nut

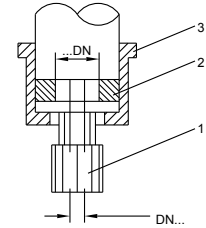


Connecting Adapters for GL to straight compression stud couplings:

GL-Straight Adapter Pos. 1 Material: PVDF	Part Number	GL-Compression Ring Pos. 2 Material:PTFE Silicone	Part Number	GL-Compression Nut Pos. 3 Material: Pressed Material	Part Number
GL18 / DN 4/6	09F9500	GL18-8 DN/mm	91F1015	GL18 Standard	91F1005
GL18 / DN 6/8	09F9510	" "	"	GL18/14*	91F1007
GL25 / DN 4/6	09F9520	GL25-12 DN/mm	90F0025	GL25 Standard	90F0020
GL25 / DN 6/8	09F9525	" "	"	" "	"
GL25 / DN10/12	09F9530	" "	"	GL25/18*	90F0022

* with large hole

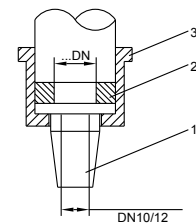
GL-Straight Adapter



Connecting Adapters for GL-25 to flexible tube nipples:

GL-Straight Adapter Pos. 1 Material: PVDF	Part Number	GL-Compression Ring Pos. 2 Material: PTFE Silicone	Part Number	GL-Compression Ring Pos. 3 Material: Pressed Material	Part Number
GL25 / 10/12	09F9540	GL25-12 DN/mm	90F0025	GL25 Standard	90F0020

GL-Nipple Adapter

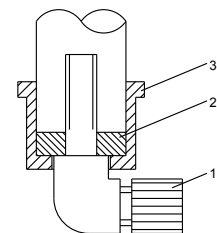


Adjustable angle threaded coupling:

Angle connectors may be applied where it is NOT POSSIBLE to use a straight connectors. These angle couplings are a SURE method of joining FLEXIBLE TUBE where pressures are <1 bar g.

Adjustable Connector Pos. 1 Material: PP or PVDF	Part Number	GL-Compression Ring Pos. 2 Material:PTFE Silicone	Part Number	GL-Compression Nut Pos. 3 Material: Pressed Material	Part Number
GL18 / DN 4/6-PP	05V6000	GL18 - 6 DN/mm	91F1010	GL18 Standard	91F1005
GL18 / DN 4/6-PV	05V6010	"	"	"	"
GL18 / DN 6/8-PP	05V6003	GL18 - 8 DN/mm	91F1015	"	"
GL18 / DN 6/8-PV	05V6025	"	"	"	"
GL25 / DN 4/6-PP	05V6001	GL25 - 8 DN/mm	90F0035	GL25 Standard	90F0020
GL25 / DN 4/6-PV	05V6011	"	"	"	"
GL25 / DN 6/8-PP	05V6003	"	"	"	"
GL25 / DN 6/8-PV	05V6025	"	"	"	"
GL25 / DN10/12-PP	05V6005	GL25 -12 DN/mm	90F0025	"	"
GL25 / DN10/12-PV	05V6015	"	"	"	"

Adjustable angle threaded coupling

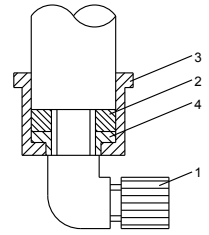


GL-Elbow connecting adapter:

Adjustable angle threaded adapters may be applied where it is NOT POSSIBLE to use a straight form of connector. These angle couplings are a SAFE method of joining FLEXIBLE TUBES where pressures are >1 up to 5 bar g.

GL-Elbow-Connecting-Adapter Pos. 1 Material: PVDF	Part Number	GL-Compression Ring Pos. 2 Material: PTFE Silicone	Part Number	GL-Compression Nut Pos. 3 Material: Pressed Material	Part Number	GL-Expander Ring Pos. 4 (included in Pos.1) Material: PVDF
GL25 / 4/6	05V6035	GL25-10 DN/mm	90F0030	GL25 Standard	90F0020	GL25
GL25 / 6/8	05V6030	"	"	"	"	"

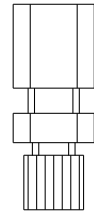
GL- Elbow conn. adapter



VS-Union connector rigid tube / flexible tube:

Union Sealing Ring Coupling to Straight Flexible Tube Coupling Material: PP or PVDF	Flexible Tube Dimensions	Rigid Tube Dimensions	Part Number
VS-PP DN4/6-D6	DN 4/6	D 6 mm	05V3130
VS-PV DN4/6-D6	DN 4/6	D 6 mm	05V3115
VS-PP DN10/12-D12	DN 10/12	D 12 mm	05V3140
VS-PV DN10/12-D12	DN 10/12	D 12 mm	05V3125
VS-PP DN4/6-D12	DN 4/6	D 12 mm	05V3150
VS-PV DN4/6-D12	DN 4/6	D 12 mm	05V3128

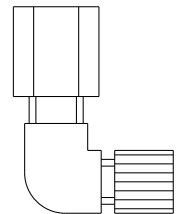
VS-Union connector rigid tube / flexible tube



WVS-Union elbow connector rigid tube / flexible tube:

Union-Elbow Sealing Ring Coupling to Elbow Flexible Tube Coupling Material: PP or PVDF	Flexible Tube Dimensions	Rigid Tube Dimensions	Part Number
WVS-PP DN4/6-D6	DN 4/6	D 6 mm	05V3160
WVS-PV DN4/6-D6	DN 4/6	D 6 mm	05V3180
WVS-PP DN4/6-D12	DN 4/6	D 12 mm	05V3165
WVS-PV DN4/6-D12	DN 4/6	D 12 mm	05V3185

WVS-Union elbow connector rigid tube / flexible tube



Technical Data

	Material PP = Polypropylene	Material PVDF = Polyvinylidenfluoride
Pressure	0,4 up to 6 bar abs.	0,4 up to 6 bar abs.
Operating temperature	max. +60 °C	max. +80 °C
Storage temperature	-20 °C bis +80 °C	-20 °C bis +120 °C

“GL” Glass connectors are used in the following M&C Products:

Compressor gas cooler EC; EC-S; EC-EX; EC-30; ECC; ECM	Sample Gas IN/OUT Condensate OUT	GL 18 GL 25
Peltier gas cooler ECP-1/GL; ECP-1000, 2000,3000; ECP-20-1/2	Sample Gas IN/OUT Condensate OUT	GL 18 GL 25
Filter F...-D	Condensate OUT	GL 25
Flowmeter FM-1	Sample Gas IN/OUT	GL 18
Flowmeter with needle valve FM-10	Condensate OUT	GL 18

Sealing ring screwed connectors may be applied where it is required to connect FLEXIBLE and RIGID Tube.

Tube connectors are used for the following M&C-gas coolers:

ECP-1	Sample Gas IN/OUT Condensate OUT	6 mm 12 mm
ECM-2SS, ECM-2PV	Sample Gas IN/OUT	6 mm