



MP06

# Analytical Diaphragm Pump Series MP®

Version MP06, MP12

## Special Features

- Corrosion resistant
- 100 % lubricant free
- Gas tight
- Maintenance free

## Application

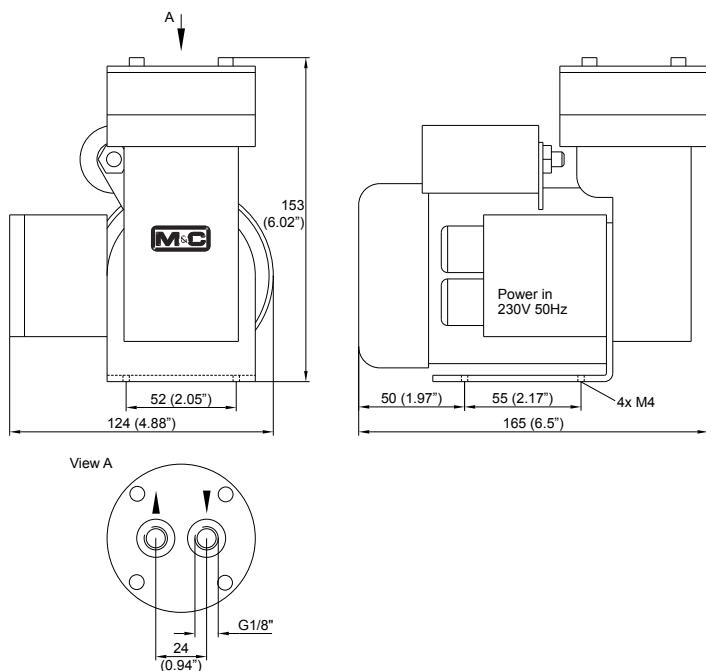
The construction of the compact diaphragm pumps type MP06 / MP12 and the pump capacity are adapted to the requirements of the gas analysis technique. Because of the resistant material the pumps are suitable especially for sampling corrosive gases.

## Description

The diaphragm pumps type MP06 and MP12 are based on the same pump head. The different pump capacities are realised by a robust pump motor working on different rotary frequencies, 1400 or 2800 rpm. The encapsulated drive guarantees a vibration-free and quiet operation. All parts in contact with the sample are made of reinforced PTFE and FKM.

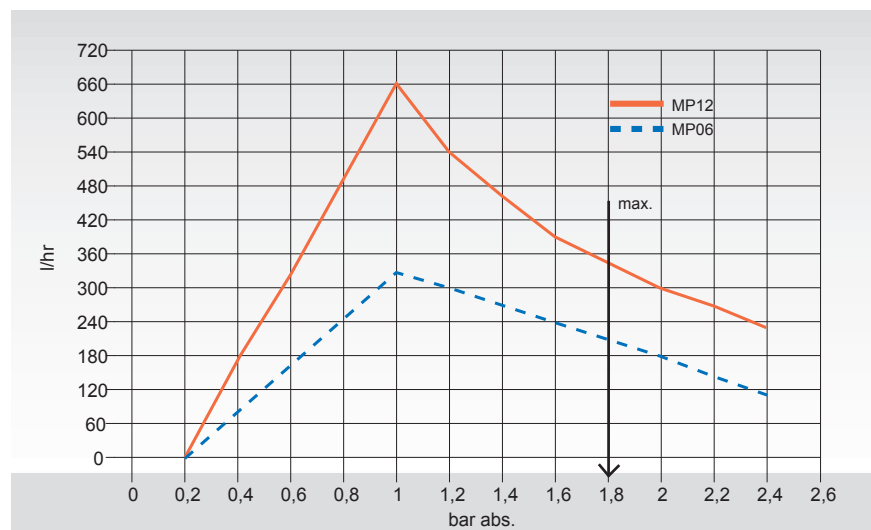
In order to guarantee an operation without interferences, it is important to pay attention to the permissible overpressure of 0,8 bar. Therefore you must decrease or regulate the quantity of gas via a needle valve on the sucking side or via a pressure control valve or bypass on the pressure side.

## Dimensions



Dimensions in mm (inch)

## Pump Capacity MP 06 / MP 12



Operating pressure max. 1.8 bar abs.!

## Technical Data

Pump series MP*	MP06	MP06/R	MP12	MP12/R
Part-No.	03 P 1000 (a)	03 P 1500 (a)	03 P 2000*	03 P 2500*
Power supply	230 V 50 Hz, 70 VA; Part No. ...a = 115 V 60 Hz, 70 VA			
Capacity max. without pressure	5.5 l/min		11 l/min	
Integrated bypass needle valve for adjustment of the delivery volume	no	yes	no	yes
Operating pressure max.	0.25 to 1.8 bar abs.			
Sample temperature	-20 to +80 °C (~-4 °F to 176 °F)			
Ambient temperature	-10 to +40 °C (14 °F to 104 °F)			
Storage temperature	-15 to +60 °C (5 °F to 140 °F)			
Operation mode	100 % continuous duty, start of the pump only without pressure!			
Protection	IP 54 EN 60529			
Weight	2.4 kg (5.29 lbs)			
Gas connections	G1/8"i DIN ISO 228T1			
Material of parts in contact with the sample	PTFE, FKM			

\* MP12 only available with 230 V / 50 Hz power supply.