



PAS

Heated, protective housing

Series PAS

enclosing customized components for sample conditioning system

Special Features

- Compact design
- Electronically controlled heating
- Digital temperature display
- Twofold safety temperature limiter
- Mounting of customized components
- Easy-to-service fitting of customized components on a mounting plate
- Individual designs possible
- Bushings for sample pipes

Application

Heated M&C sample conditioning systems are used where increased and constant operating temperatures are necessary for the analysis of gases or liquids.

The large M&C product range of heatable components, in connection with the heated PAS-... protective housing, allows you to solve problems specific to your applications.

Designs with European standard explosion-proof heating up to 120 °C operating temperature or with steam heating as well as larger cabinets are available on request.

Description

The conditioning components are housed in the protective cabinet (wall mounting) made of stainless steel, which is heat insulated on all sides. The front door with its single-knob lock enables easy access to the accommodated components. An observation window made of triple safety glass is available as an option.

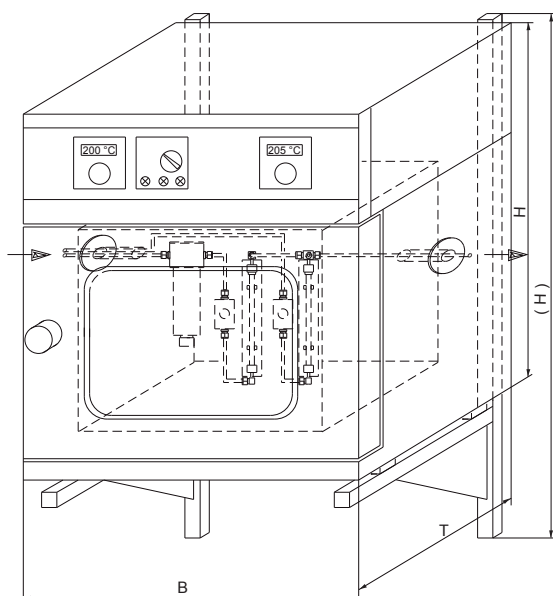
The heating of the cabinet is selectable within the range of +20 to +200 °C. An exact, electronic control unit keeps the temperature constant at ± 1 °C. The temperature is displayed digitally. Two monitoring devices (temperature selection control and temperature limiter), which are fitted additionally, ensure safe operation. In order to distribute the temperature, a ventilator is fitted additionally into models of size PAS-400 and above.

Depending on individual requirements the following components can be installed:

- Filters
- Solenoid valves
- Valves, manually or pneumatically operated
- Ball valves, manually or pneumatically operated
- Flowmeters with a needle valve and a monostable flow control
- Pumps (pump head inside heated part, motor outside)
- Customized parts

Suitable bushings into the heated interior are provided for the heated sample lines.

Dimensions



Technical Data

Heated sample conditioning housing					
Series PAS	PAS-100	PAS-200	PAS-300	PAS-400	PAS-500
Assembly interior:					
Width mm	320	400	480	400	560
Height mm	240	320	320	400	480
Depth mm	175	250	250	330	400
External dimensions:					
Width B mm	470	550	630	550	710
Height H mm	520 (720)*	600 (800)*	600 (800)*	680 (880)*	760 (960)*
Depth T mm	325	400	400	480	550
Weight empty kg	20	28	30	35	50
Ventilator	no	no	no	yes	yes
Power consumption	600 W	1100 W	1200 W	1400 W	2000 W
Power supply	230V 50/60Hz other voltages on request				
Electrical connection	3 m mains cable with an earthing-pin plug; a suitable terminal box is provided for built-in components				
Material of cabinet	Stainless steel 304				
Mounting	Wall-mounting with optional wall console				
Temperature control	Electronically, microprocessor controlled, incl. a solid-state relay				
Temperature display	Digital LED display				
Temperature limit	Temperature selection control and limiter in accordance with DIN 12880, protective classification 3.1				
Temperature selection	Lockable rotary button, Range +20 to +200 °C (Standard)				
Operating temperature	> 5 °C above ambient temperature up to +200 °C				
Ambient temperature	max. +40 °C				
Case protection	IP20 EN 60529				
Options:	Observation window in door External temperature control (2 x PT100 internal) Min. temperature monitoring, status alarm contact, potential free, contact rating 250VAc 16A EEx explosion-proof heating up to +120 °C inner operating temperature Steam heating Wall bushings for sample pipes Built-in components specific to the system				

* Dimensions in () are corresponding to the total height incl. the wall console

Data required to submit an offer:

- Size
- Number, position and size of the bushings
- Details on built-in components
- Flow sheet, assembly drawing
- Required inner operating temperature