

WC Connectors

MACFIT, Flexible and Rigid

SECTION

5



WC Connectors

WC Connectors

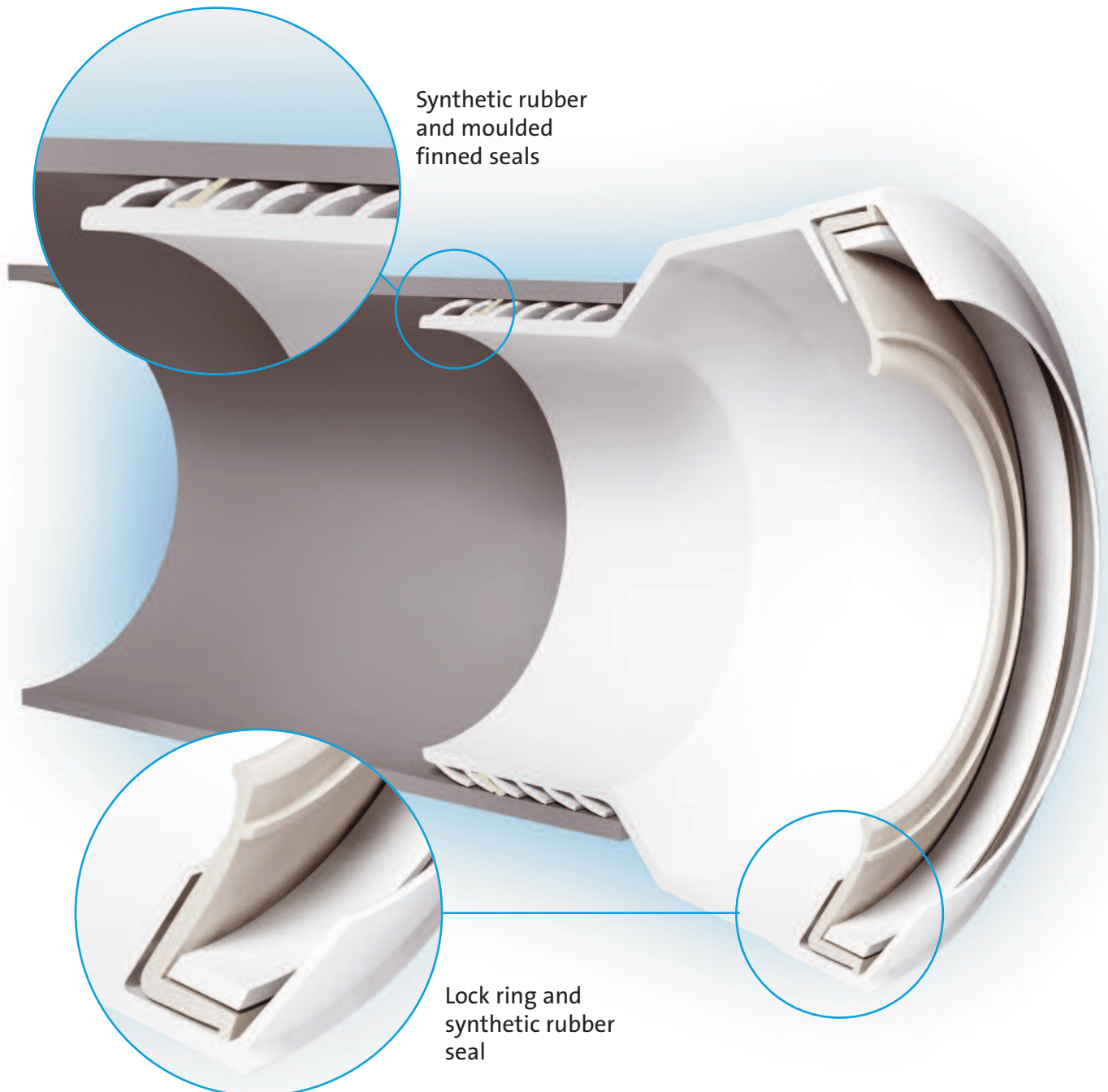
WC Connectors General

- M^cAlpine is the only European manufacturer to offer EVA (ethylene vinyl acetate), rigid polypropylene and flexible polypropylene WC connectors
- All outlets fit inside diameter pipe sizes as follows:
 - 110mm Plain End:** Ring seal socket of 110mm soil or underground pipe fittings
 - 4"/110mm:** PVC-U and cast iron
 - 3½"/90mm:** Cast iron
 - 3"/75mm:** PVC-U and cast iron
- Fixing instructions and dimensional leaflet for all WC connectors available on request

MACFIT

- MACFIT WC connectors are manufactured in EVA with synthetic rubber and moulded finned seals
- MACFIT incorporates a new 'lock ring' inlet seal (patent pending) to give a superior, tighter connection to the WC pan outlet
- European Patent No. 1655528

MACFIT WC Connectors





Straight
97-107mm Inlet
4"/110mm Outlet

Code **MAC-1**



Straight
97-107mm Inlet
3 1/2"/90mm Outlet

Code **MAC-3**



Straight
97-107mm Inlet
3"/75mm Outlet

Code **MAC-3C**



20mm Offset
97-107mm Inlet
4"/110mm Outlet

Code **MAC-4**



40mm Offset
97-107mm Inlet
4"/110mm Outlet

Code **MAC-4A**



14° Angle
97-107mm Inlet
4"/110mm Outlet

Code **MAC-7A**



90° Bend
97-107mm Inlet
4"/110mm Outlet

Code **MAC-8**



90° Bend (Long)
97-107mm Inlet
4"/110mm Outlet

Code **MAC-8L**



Straight Extension
Adjustable Length
4"/110mm Outlet

Code **MAC-EXTA**



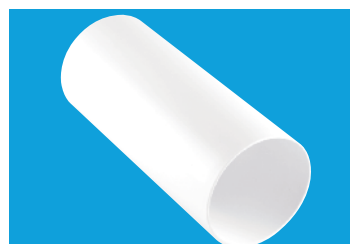
Straight Extension
Adjustable Length
3 1/2"/90mm Outlet

Code **MAC-EXTB**



Straight Extension
Adjustable Length
3"/75mm Outlet

Code **MAC-EXTC**



Linking Connector
Adjustable Length
(Polypropylene)

Code **MACLINK**

Short Straight Connector

- Connector can be used where the soil pipe has already been installed with only the final fixing of the WC pan to be connected
- Soft synthetic rubber inlet connection secured by a worm drive hose clip provides a secure and reliable connection to the WC pan spigot

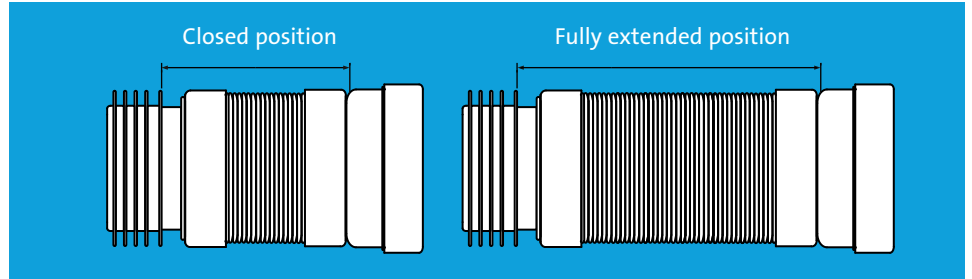


Overall length of
connector 88mm
97-107mm Inlet -
4"/110mm Outlet

Code **MAC-1-BTW**

Flexible WC Connectors

- There is no British Standard for flexible WC connectors but M^CAlpine connectors comply to German Standard DIN 1389:2000-05 for flexible WC connectors
- Tested by German Testing House LGA, certificate number 572125072a and other testing houses. Tests prove conclusively that there is no build-up of sediment and the product is perfectly fit for purpose



Flexible WC Connectors



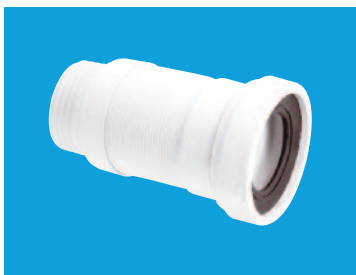
97-107mm Inlet 4"/110mm Outlet

Closed 170mm	>	Extended 410mm	Closed 140mm	>	Extended 290mm	Closed 100mm	>	Extended 160mm
WC-F26R			WC-F23R			WC-F18R		



97-107mm Inlet 4"/110mm Outlet 1/4" Universal Vent Boss

180mm	>	380mm	150mm	>	280mm	
WC-F26RV			WC-F23RV			-



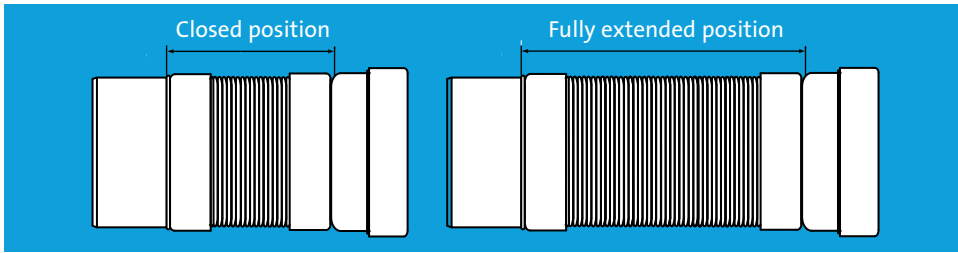
97-107mm Inlet 3 1/2"/90mm Outlet

170mm	>	410mm	140mm	>	290mm	100mm	>	160mm
WC-F26S			WC-F23S			WC-F18S		



97-107mm Inlet 3 1/2"/90mm Outlet 1/4" Universal Vent Boss

180mm	>	380mm	150mm	>	280mm	
WC-F26SV			WC-F23SV			-



97-107mm Inlet 110mm Plain End Outlet

Closed 160mm > Extended 380mm Closed 130mm > Extended 260mm

WC-F26P

WC-F23P

-



97-107mm Inlet 110mm Plain End Outlet 1 1/4" Universal Vent Boss

170mm > 380mm 140mm > 260mm

WC-F26PV

WC-F23PV

-

90° Flexible WC Connectors



97-107mm Inlet 4"/110mm Outlet

Closed 190mm > Extended 270mm

Code **WC-CON8F18**



97-107mm Inlet 4"/110mm Outlet

220mm > 400mm

Code **WC-CON8F**



97-107mm Inlet 4"/110mm Outlet 1 1/4" Universal Vent Boss

220mm > 400mm

Code **WC-CON8FV**

Flexible Extensions for WC Connectors



110mm Inlet 4"/110mm Outlet

Closed 95mm > Extended 195mm

Code **EXTA-F**



110mm Inlet 3 1/2"/90mm Outlet

95mm > 195mm

Code **EXTB-F**

Flexible WC Connectors for Back to Wall WC Pan

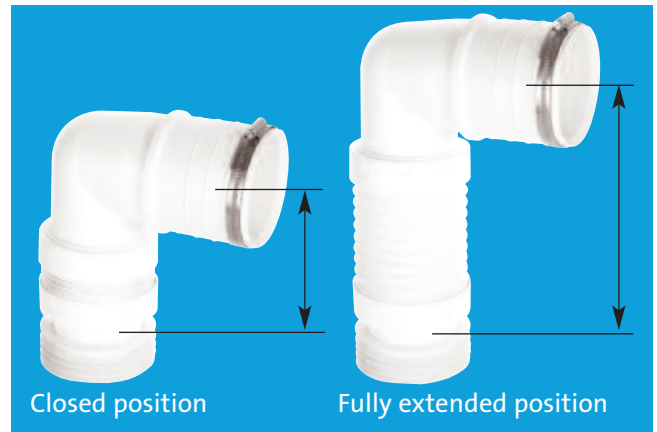
Flexible WC Connectors for Back to Wall WC Pan

- Soft synthetic rubber inlet connection secured by a worm drive hose clip provides a secure and reliable connection to the WC pan spigot prior to the final placement against wall or furniture
- There is no British Standard for flexible WC connectors but M^cAlpine WC connectors comply to German Standard DIN 1389:2000-05 for flexible WC connectors

- Tested by German Testing House LGA, certificate number 572125072a and other testing houses. Tests prove conclusively that there is no build-up of sediment and the product is perfectly fit for purpose



90° Short Bend in vertical position



Closed 170mm

Extended 250mm

97-107mm Inlet - 4"/110mm Outlet

Code

WC-CON8F18-BTW

97-107mm Inlet - 3½"/90mm Outlet

Code

WC-CON8F18-S-BTW



Closed 150mm

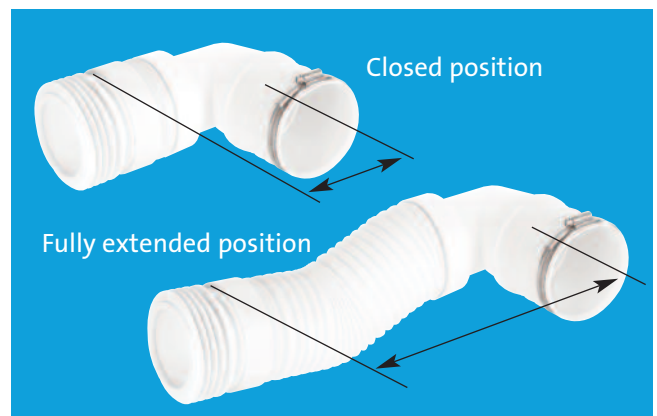
Extended 310mm

97-107mm Inlet - 4"/110mm Outlet

Code

WC-F21R

90° Long Bend in horizontal position



Closed 230mm

Extended 480mm

97-107mm Inlet - 4"/110mm Outlet

Code

WC-CON8F-BTW

97-107mm Inlet - 3½"/90mm Outlet

Code

WC-CON8F-S-BTW

97-107mm Inlet - 3½"/90mm Outlet

Code

WC-F21S

Patents pending

■ Dimensional leaflet available on request



Straight
97-107mm Inlet
4"/110mm Outlet

Code **WC-CON1**



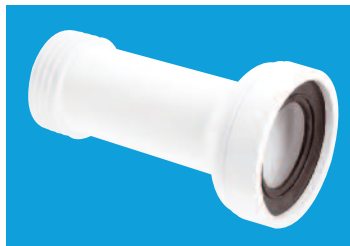
Straight with Vent Boss
97-107mm Inlet
4"/110mm Outlet

Code **WC-CON1V**



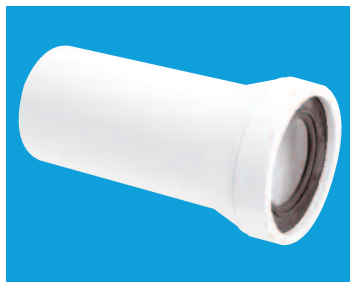
Straight Adjustable Length
97-107mm Inlet
4"/110mm Outlet

Code **WC-CON2**



Straight Adjustable Length
97-107mm Inlet
3½"/90mm Outlet

Code **WC-CON2B**



Straight Adjustable Length
97-107mm Inlet
110mm Plain End Outlet

Code **WC-CON3**



20mm Offset
97-107mm Inlet
4"/110mm Outlet

Code **WC-CON4**



40mm Offset
97-107mm Inlet
4"/110mm Outlet

Code **WC-CON4A**



40mm Offset
97-107mm Inlet
110mm Plain End Outlet

Code **WC-CON4B**



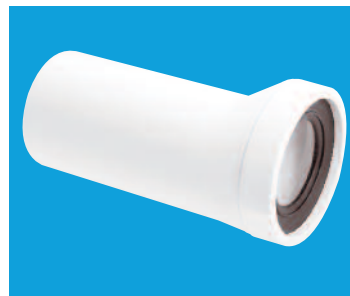
20mm Offset Adjustable Length
97-107mm Inlet
4"/110mm Outlet

Code **WC-CON5**



20mm Offset Adjustable Length
97-107mm Inlet
3½"/90mm Outlet

Code **WC-CON5B**



20mm Offset Adjustable Length
97-107mm Inlet
110mm Plain End Outlet

Code **WC-CON6**



14° Angle Adjustable Length
97-107mm Inlet
4"/110mm Outlet

Code **WC-CON7**



14° Angle
97-107mm Inlet
4"/110mm Outlet

Code **WC-CON7A**



14° Angle Adjustable Length
97-107mm Inlet
3½"/90mm Outlet

Code **WC-CON7B**



45° Angle
97-107mm Inlet
4"/110mm Outlet

Code **WC-CON16**

Rigid WC Connectors



90° Bend
Adjustable Length
97-107mm Inlet
4"/110mm Outlet

Code **WC-CON8**



90° Space Saving
Bend
Adjustable Length
97-107mm Inlet
4"/110mm Outlet

Code **WC-CONQ**



90° Bend
Adjustable Length
with Vent Boss
97-107mm Inlet
4"/110mm Outlet

Code **WC-CON8V**



90° Space Saving
Bend
Adjustable Length
97-107mm Inlet
110mm Plain End
Outlet

Code **WC-CONQP**



90° Bend
Adjustable Length
Extended Inlet
97-107mm Inlet
4"/110mm Outlet

Code **WC-CON8E**

Extension Pieces



Straight Extension
Adjustable Length
4"/110mm Outlet

Code **WC-EXTA**



90° Bend
Adjustable Length
97-107mm Inlet
110mm Plain End
Outlet

Code **WC-CON9**



Straight Extension
Adjustable Length
3½"/90mm Outlet

Code **WC-EXTB**



90° Bend
Adjustable Length
with Vent Boss
97-107mm Inlet
110mm Plain End
Outlet

Code **WC-CON9V**



10mm Offset
Extension
Adjustable Length
4"/110mm Outlet

Code **WC-EXTC**



10mm Offset
Extension
Adjustable Length
3½"/90mm Outlet

Code **WC-EXTD**

Straight Telescopic WC Socket Extension

- Short telescopic socket extension connector to fit the socket of any MACFIT, Rigid or Flexible WC connector
- Can extend a WC connector already installed and requiring alteration before final placement to the WC pan
- Provides adjustment to the required length where soil pipe already installed



Overall length of telescopic socket extension piece
133mm

Code WC-CON-EXT

WC Connector Accessories

Boss Pipe for use with WC Connectors

- Finned seal spigot for internal connection to cast iron, plastic or clay 4"/110mm pipe
- Ideal for low level connections



3½"/90mm x 4"/110mm Connector with 'O' seal socket to fit any M^CAlpine rigid or flexible WC connector with 4"/110mm rubber outlet seal when rubber seal is removed. With 1½" universal pipe boss including blanking cap. *As illustrated opposite with WC-CON8 (cut down to required length)*

Code WC-BP1



Anti Cross-Flow and Rodent Barrier Valve

- Will prevent cross-flow if fitted to WC pans that are installed back to back
- For use where special measures are necessary for control of rodents as recommended in Approved Document H1 The Building Regulations 2000 (2002 edition)
- Manufactured in black polypropylene to prevent light penetration
- Deters rodents from entering building through WC
- For use with any M^CAlpine rigid or flexible WC connector with 4"/110mm rubber outlet seal
- Can be installed in horizontal or vertical position



Code **ARB-1**

WC Connector Wall Flange



To fit over Rigid WC Connector with 4"/110mm Rubber Seal Outlet

Code **WC17-90**

To fit over 4"/110mm Soil Pipe or Rigid WC Connectors with Plain End Outlet

Code **WC17-110**

To fit over Collar of Flexible WC Connector

Code **WC17-114**

WC Frame Connector Kit



WC Frame Connector Kit comprises WC connector with 90mm end, 110mm outlet seal, flush pipe with finned seal connector and fixing bolts and caps. Suitable for in-wall WC frames

Code **FPKIT-3**